

# Release Notes



## SV9100 CP20 R10.50.57

<b>Product</b>	-	Univerge SV9100
<b>Version</b>	-	Release 10.50.57
<b>Date</b>	-	01-May-2020
<b>Document Reference</b>	-	FCO 2020.046
<b>Category</b>	-	New Features
<b>Issued by</b>	-	NEC Enterprise Solutions EMEA

Queries concerning this document can be addressed to [SMB.TECHSUPPORT@EMEA.NEC.COM](mailto:SMB.TECHSUPPORT@EMEA.NEC.COM)

Great care has been taken to ensure that the information contained in this document is accurate and complete. Should any errors or omissions be discovered or should any user wish to make a suggestion for improving this document, they are invited to send the relevant details to [supportcentre@emea.nec.com](mailto:supportcentre@emea.nec.com)

Disclaimer: Our products are subject to continuous development and improvement. Therefore additions or modifications to the products after mentioned date may cause changes to the technical and functional specifications. No rights can be derived from the contents of this document. NEC Nederland B.V. and/or its respective suppliers make no representations about the suitability of the information contained in this document and related graphics published as part of the services for any purpose. This document and related graphics are provided "as is" without warranty of any kind. NEC Nederland B.V. and/or its respective suppliers hereby disclaim all warranties and conditions with regard to this information, including all warranties and conditions of merchantability, whether express, implied or statutory, fitness for a particular purpose, title and non-infringement. In no event shall NEC Nederland B.V. and/or its respective suppliers be liable for any special, indirect or consequential damages or any damages whatsoever resulting from loss of use, data or profits, whether in an action of contract, negligence or other tortious action, arising out of or in connection with the use or performance of information available from the services. This document and related graphics published on the services could include technical inaccuracies or typographical errors. Changes are periodically added to the information herein. NEC Nederland B.V. and/or its respective suppliers may make improvements and/or changes in the product(s) and/or the program(s) described herein at any time. The example companies, organizations, products, domain names, e-mail addresses, logos, people, places and telephone numbers depicted herein are fictitious. No association with any real company, organization, product, domain name, e-mail address, logo, person, place or telephone number is intended or should be inferred.

All rights reserved. Reproduction in whole or in part is prohibited without the written consent of the copyright owner. This document is provided for information only. NEC Enterprise does not provide any warranties covering this information and specifically disclaims any liability in connection with this document. NEC and the NEC logo are trademarks or registered trademarks of NEC Corporation that may be registered in Japan and other jurisdictions. All trademarks identified with © or TM are registered trademarks or trademarks of their respective owners. Models may vary for each country, and due to continuous improvements this specification is subject to change without notice. Please refer to your local NEC contact(s) for further details.

## Contents

1.	INTRODUCTION .....	3
2.	IDENTIFICATION.....	3
3.	COMPATIBILITY .....	3
4.	UPGRADE INSTRUCTIONS .....	4
5.	FUNCTIONAL CHANGES.....	8
6.	SOLVED PROBLEMS.....	9
6.1.	List of Solved Problems .....	9
7.	KNOWN PROBLEMS.....	10
8.	SECURITY .....	10
9.	MATERIALS .....	10
9.1.	Physical Distribution .....	10
9.2.	On-line Distribution.....	10

## **1. INTRODUCTION**

This FCO provides information about the Maintenance Release of Univerge SV9100 CP20 Main Software.

- SV9100 CP20 Main Software 10.50.57

## **2. IDENTIFICATION**

This release is SV9100 CP20 Main Software 10.50.57.

## **3. COMPATIBILITY**

Any UNIVERGE SV9100 CP20 can be upgraded with this system software.

## 4. UPGRADE INSTRUCTIONS

It is always advisable to save the system configuration prior to any upgrade.

**WARNING: Powering off while card firmware is occurring, can cause corruption of cards. Please ensure all cards are running (up to 10 minutes after upgrade dependent on number and type of cards (LCF upgrade is longest) before performing any reset. See further explanation later in this document.**

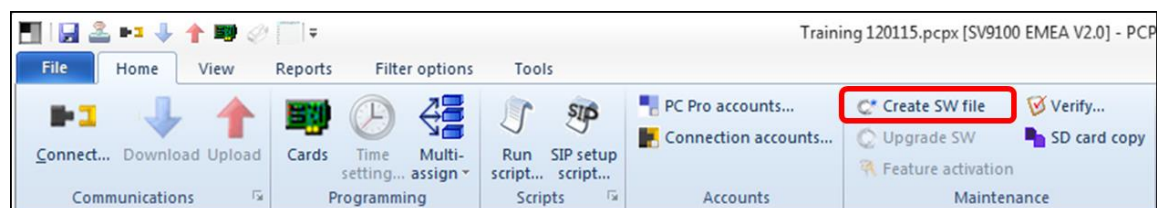
To perform a system software and firmware upgrade:

1. Turn the system power off.
2. Once the system has powered down, insert the USB Memory containing the software upgrade into the USB port on the GCD-CP20.
3. Push in and hold the **Load** button.
4. Turn the system power on.
5. Continue holding the **Load** button for approximately 10 seconds or until Status LED5 begins flashing red.
6. Release the **Load** button.
7. Wait until the Status LEDs on the GCD-CP20 have the following indications (approximately two minutes):
  - LED 2: Flashing Red
  - LED 3: Flashing Red
  - LED 4: Flashing Red
  - LED 5: Steady Red
8. Turn the system power off and un-install the USB Memory.
9. Turn the system power back on.
10. When the system has completed reloading the software, the Status LED begins flashing on the GCD-CP20. The remaining four LEDs are off.
  - To confirm the new software version has been installed, the system version number can be viewed by pressing the FEATURE + 3 keys on any display multiline terminal.
  - The existing system software in the flash memory is replaced, but the customer data (stored in the RAM) is saved.

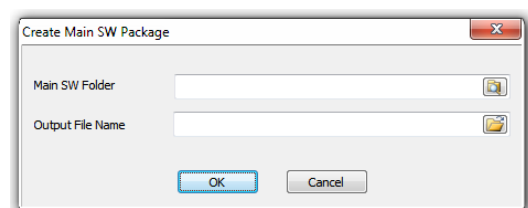
Or via Remote

First create a remote upgrade file from the same software you would add to the USB stick.

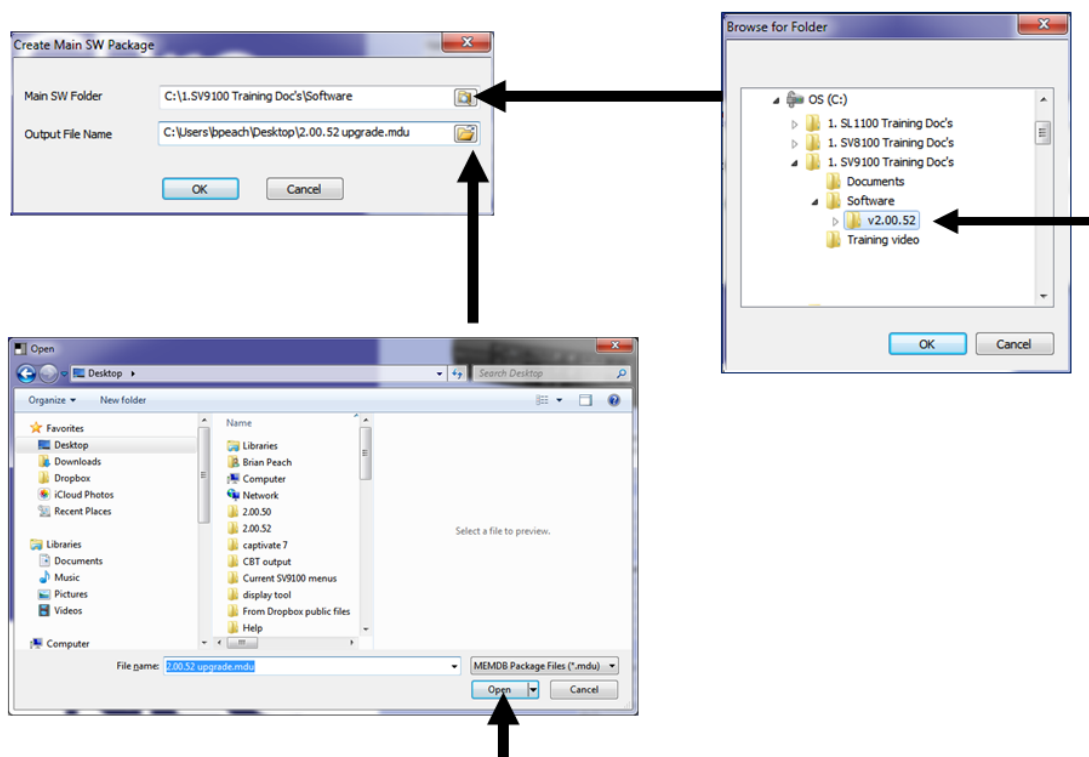
From the ribbon bar, select Create SW file:



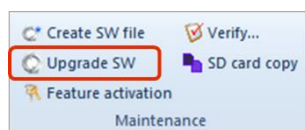
This will pop a window:



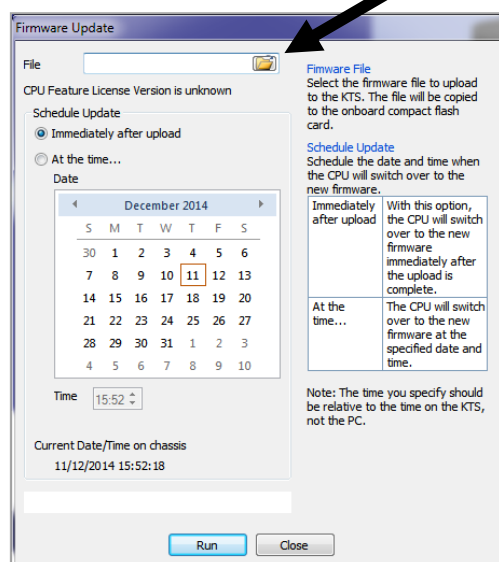
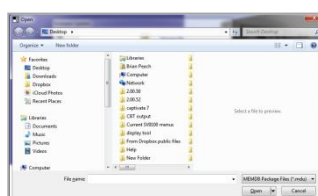
Select the area of the Main SW and where to save the output of the remote upgrade file:



Connect to the system via PCPro in the normal manner, and from the ribbon bar select Upgrade SW



In the File box, select the mdu file you created for the upgrade, then select when the upgrade should occur (immediately or the date specified). At this point the system will perform its normal upgrade cycle and reboot.



## **Main Software Upgrade and Option Card Firmware**

After a main software upgrade the SV9100 reboots (either manually if via USB or automatically if via PcPro/Webpro).

After reboot the main software will then push out to the option cards (including IPLE) any firmware updates.

Firmware updates are not always required, it is dependent on version upgrading from and to.

**It is important that during this firmware upgrade the system is not reset**, as doing so interrupts the firmware upgrade and can cause corruption of the cards performing upgrade at the time.

## **Upgrade in a Netlink Environment**

1. Access Primary system via PCPro or WebPro in NetLink network.

2. Set PRG51-16-01 to Disable.

*Note: This change prevents replication error from occurring between systems.*

3. Access Secondary systems via PCPro or WebPro in NetLink network.

*Note: Upgrade should start with Secondary systems to update properly.*

*As such NetLink network is kept up, and you do not need to worry about the presence of substitute Primary system.*

4. Upgrade main system software of Secondary systems.

*Note: Check it has upgraded the main system software of all properly.*

5. Upgrade main system software of Primary system.

*Note: Check it has upgraded the main system software properly.*

6. Restore PRG51-16-01 to previous setting data.

## 5. FUNCTIONAL CHANGES

Support for SV9100 R10.50.57 Features:

- InScheduler support
- IRG Logon
- IRG Delayed Ringing
- SIP Trunk Password increased to 64 Chars
- Improved InUC display sizing for GT890 (No PCPro changes for this item)

For full details please refer to the Release Overview.



## 6. SOLVED PROBLEMS

### 6.1.List of Solved Problems

The following items are fixed in this version:

Reference	Description
<b>F160413001</b>	<b>restriction override problem</b>
	Toll restriction override issues occur if have Trunk access code set to f-Route.
<b>F190717001</b>	<b>SDP Version is not incremented</b>
	When SDP properties are changed by SIP carrier SV9100 does not increment SDP version and call is dropped by network provider.
<b>F191219002</b>	<b>System doesn't play fixed message for inbound external calls if CLI is enabled</b>
	System doesn't play fixed message for inbound external calls if CLI is enabled on the trunk. Caller may consider call has cut off.
<b>F200206003</b>	<b>System is intermittently resetting</b>
	System is intermittently resetting

### 6.2.List of Previously Solved Problems

The following items are fixed in:

10.30.53

Reference	Description
<b>F200108001</b>	<b>Intermediate Certificate not supported</b>
	SV9100 platform does not support use of intermediate certificates in the chain. Now corrected.

## **7. KNOWN PROBLEMS**

The following are not problems but are listed to for awareness.

N/A

## **8. SECURITY**

All ICT installations are at risk of unauthorized intrusion and subsequent misuse. Such intrusions may result in significant losses to the company affected, including but not limited to financial liabilities, data privacy breach, intellectual property, material assets and associated labour or legal costs.

NEC products contain a variety of features designed to help prevent and combat such misuse. To assure their effectiveness it is essential that such features are configured, deployed and maintained in an appropriate manner by the installing party in consultation with the user of the equipment.

The ultimate responsibility for assuring the overall security of the ICT installation resides with the using company. The effectiveness of their security measures depends on the quality and rigorousness of implementation of their security policy by ICT administrators and their user community.

Information about the security features in NEC products and how to configure them is contained within the product documentation.

***There are no specific additions or amendments to security features in this release.***

## **9. MATERIALS**

### **9.1. Physical Distribution**

N/A

### **9.2. On-line Distribution**

Any software related to this release can be downloaded from the software database on BusinessNet.  
<http://businessnet.nec-enterprise.com>.